



**2021**

# Lumi Fabric

[www.neslight.com](http://www.neslight.com)

**NES** Light  
SMART SOLUTION



# Lumi Fabric

## CONTENTS

- P3. Accessories & Hardware
- P4. Lumi Fabric Box
- P5. Non-Lit Box Frames
- P7. Light Box Frames

- Fast and simple installation.
- High performance and guaranteed quality.
  - User-friendly and lightweight.
- Long product life for effortless maintenance.
  - Eco-friendly mercury-free.

## CUSTOM LED FABRIC LIGHT BOX

### FEATURES

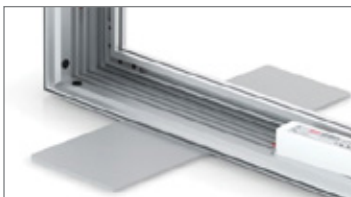
Disassemblable tension fabric-face lightbox with LED lamps, in sizes up to 15 ft. and larger

- Fabric graphic face** - for the softer look
- Super-lightweight** - for easy wall-mount
- Ships disassembled** - for economy shipping
- LED lamps** - longer life, lower power
- Jumbo sizes** - up to 15 ft. across
- Replaceable graphics** - no tools needed

## Feet for free standing frames & Hanging hardware

NES Light carries a variety of accessories and hardware systems for our SEG Frames (Silicone Edge Graphics) product line. Some of our most popular accessories and hardware include 180° connectors, assorted hanging systems, corner hardware and various styles of feet available for standing displays. The 180° connectors are excellent for creating large-scale graphics that can be virtually any length.

We recommend utilizing the standing display feet to create a masterpiece that is approachable on the floor and mobile-capable since it is not limited to hanging on a wall – great for trade shows and retail store P-O-P signage.



Feet for Standing



Assorted Hanging Systems



Stabilizers



Corner Hardware



LED Lights and Controls



Silicone Strip (Keder)

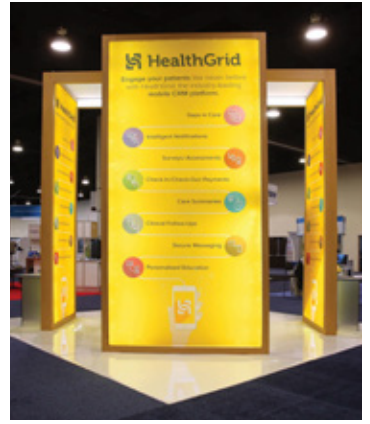
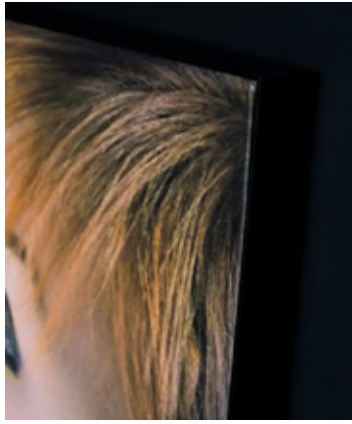
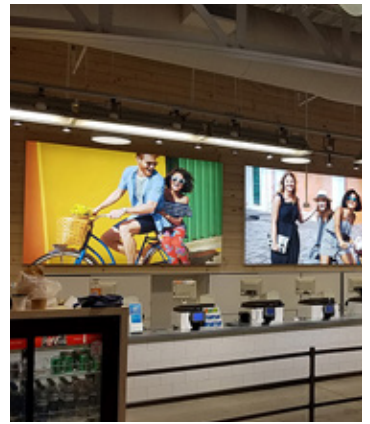
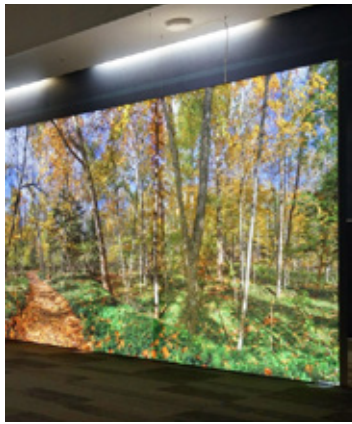


Power Supplies

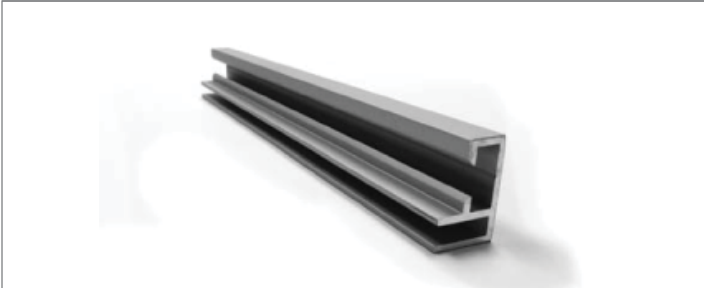


Custom Parts

# Lumi Fabric Box

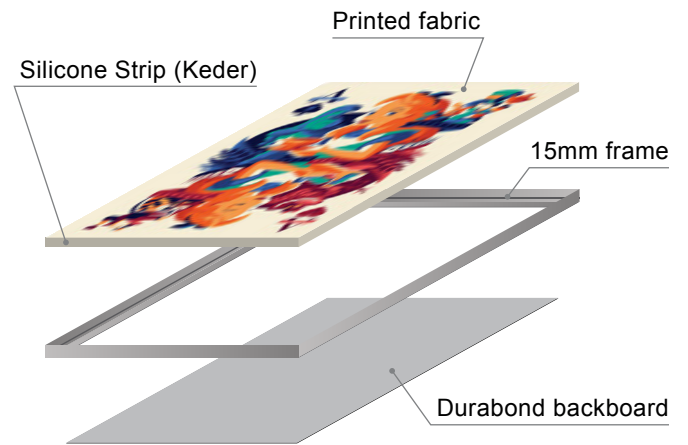


## 0.59 inch



### 15mm Basic Non-Lit

- 15mm height (5/8")
- Quick assembly using basic corner hardware
- Drill through moulding and screw directly to the wall
- 180° connectors available for unlimited lengths
- Our most economical solution

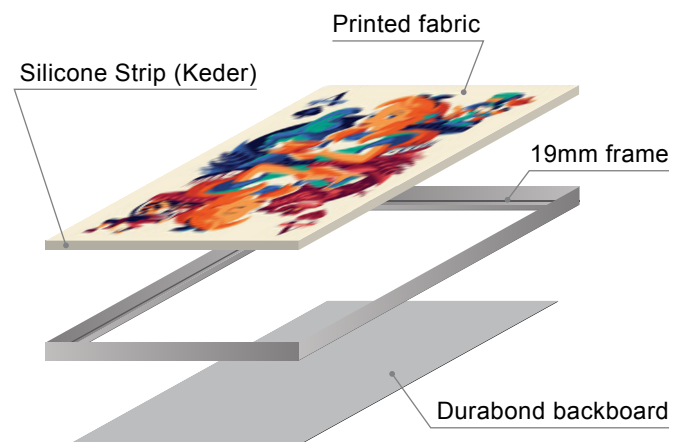


## 0.75 inch

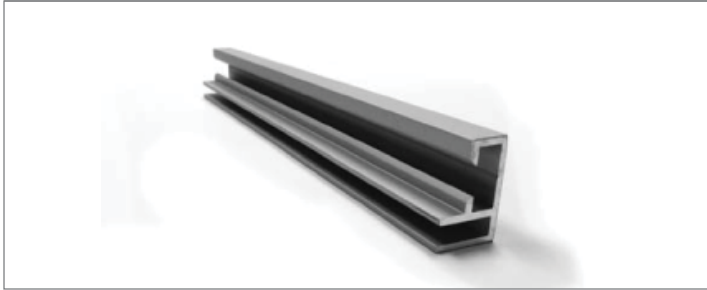


### 19mm Basic Non-Lit

- 19mm Height (3/4")
- Quick assembly using basic corner hardware
- Wall mounting utilizing our basic wall mount
- Large frames screw directly to the wall
- 180° connectors available for unlimited lengths
- An economical frame

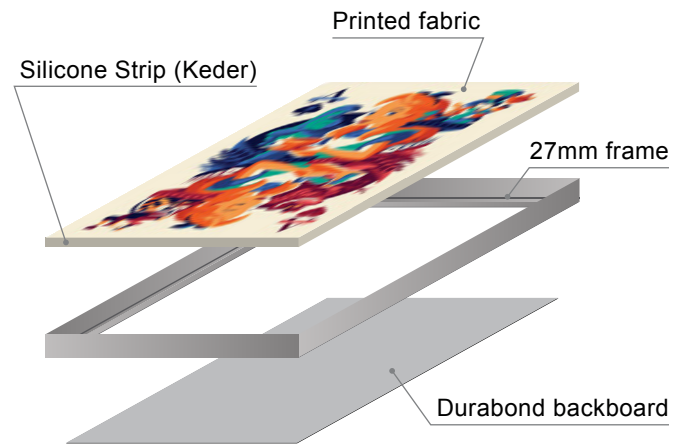


## 1.06 inch

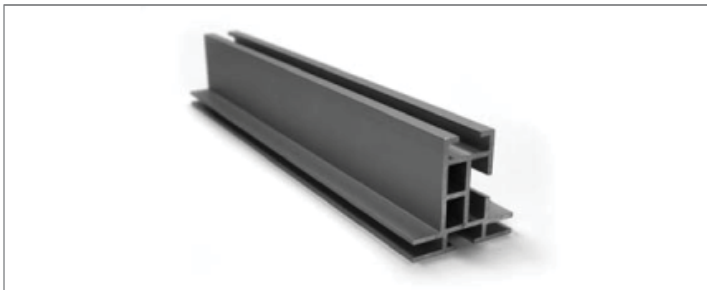


### 27mm Basic Non-Lit

- 27mm Height (1")
- Quick assembly using large corner hardware
- Wall mounting utilizing our big wall mount
- Stabilizers for optimum reinforcement
- 180° connectors available for unlimited lengths
- Ceiling Mounts

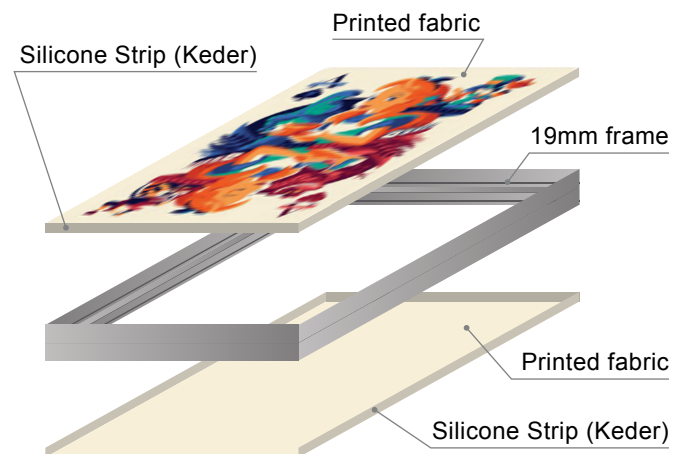


## 1.73 inch

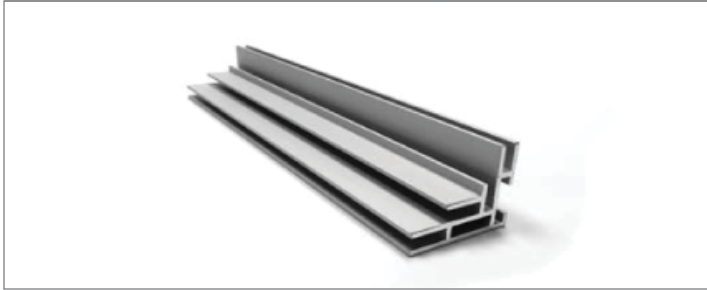


### 44mm Double Side Non-Lit

- 44mm Height (1-3/4")
- Suitable for double sided textile print with silicone strip
- Additional reinforcement by large corner hardware
- Frequently used as a free-standing model
- Stabilizers for available optimum reinforcement
- Ceiling pendants for hanging
- 180° connectors available for unlimited lengths
- Various styles of feet available for standing

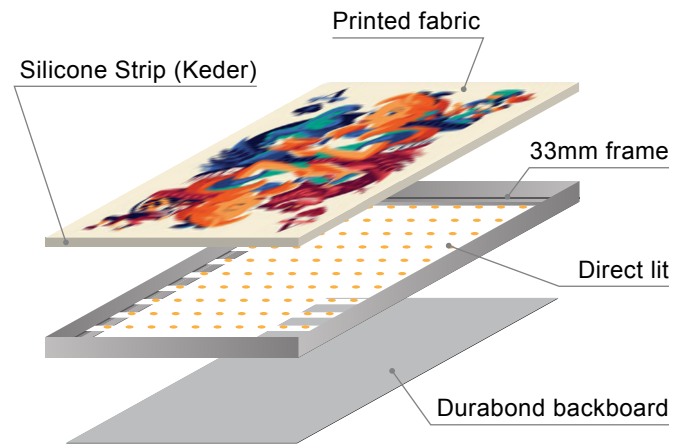


## 1.3 inch

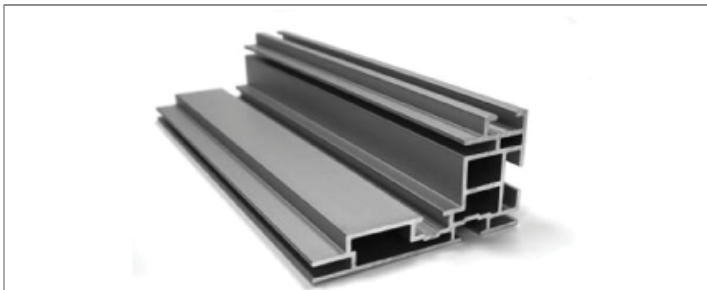


### 33mm LED Panel Frame Direct lit SEG Frames

- 39mm Height (1-1/2")
- Suitable for textile printing with silicone strip
- Wall mounting with Install Bar
- Suitable for Direct lit
- 180° connectors available for unlimited lengths

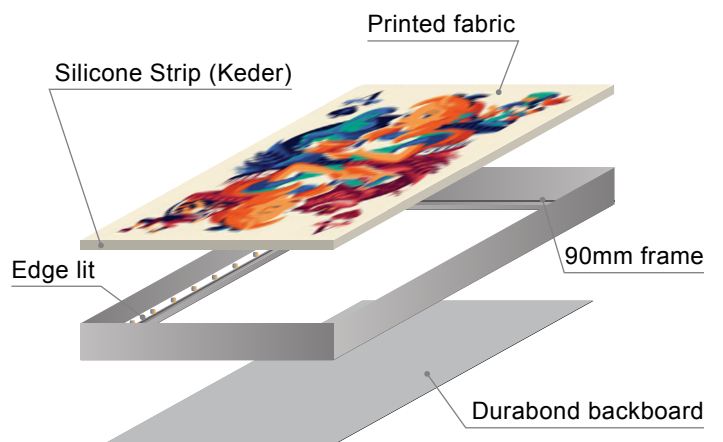


## 3.54 inch

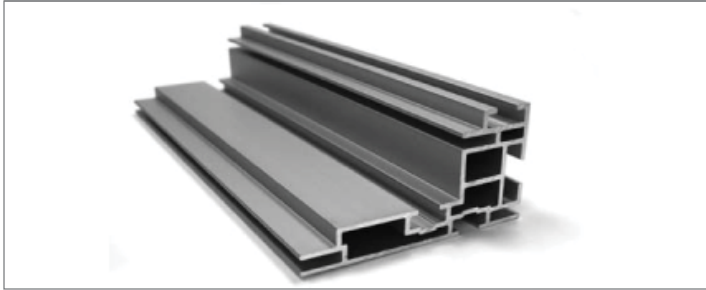


### 90mm Single Side Frame

- 90mm Height (3-1/2")
- Suitable for Edge Lit LED Lights
- Stabilizers for available optimum reinforcement
- Ceiling pendants for hanging
- Easily disassembled transport
- 180° connectors available for unlimited lengths
- Various styles of feet available for standing
- Blockout fabric backer can be used for nonlit side

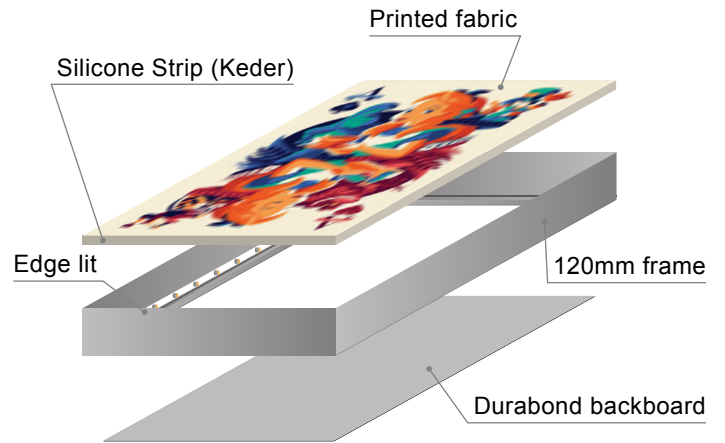


## 4.72 inch

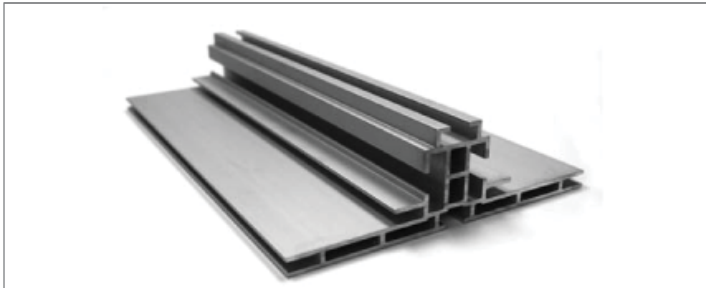


## 120mm Single Side Frame

- 120mm Height (4-3/4")
- Suitable for High Power LED lights
- Stabilizers for available optimum reinforcement
- Ceiling pendants for hanging
- Easily disassembled transport
- 180° connectors available for unlimited lengths
- Various styles of feet available for standing
- Blockout fabric backer can be used for nonlit side

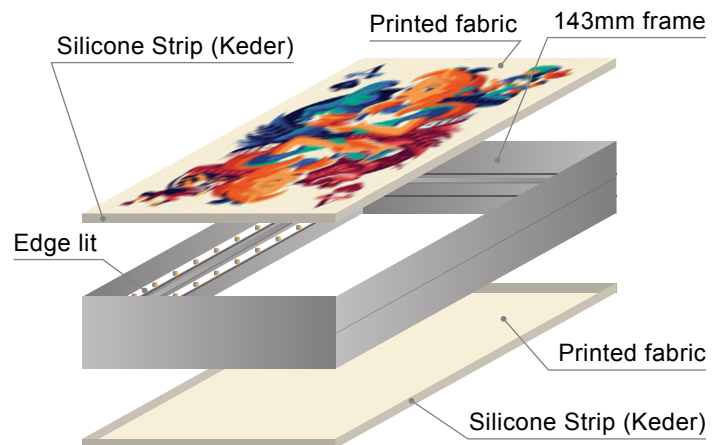


## 5.63 inch



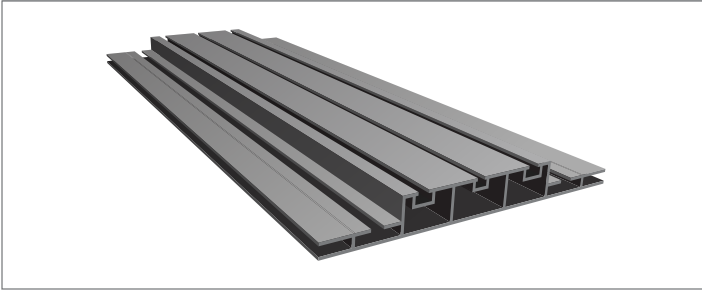
## 143mm Double Side Frame

- 143mm Height (5-5/8")
- Suitable for High Power LED Module
- Stabilizers for available optimum reinforcement
- Ceiling pendants for hanging
- Easily disassembled transport
- 180° connectors available for unlimited lengths
- Various styles of feet available for standing
- Additional reinforcement by double large corner hardware



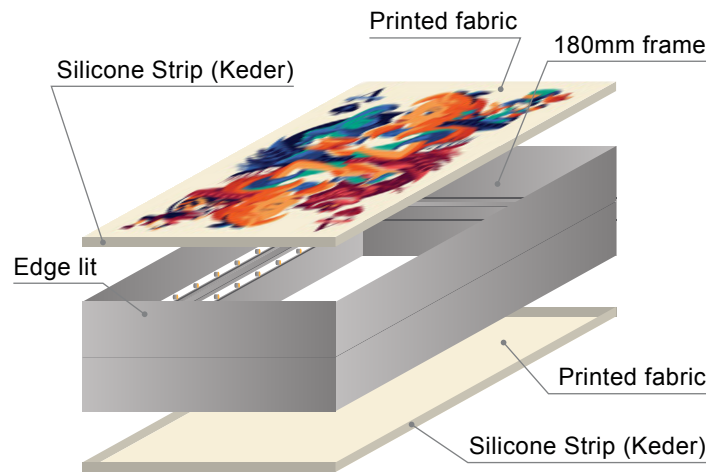


## 7.08 inch

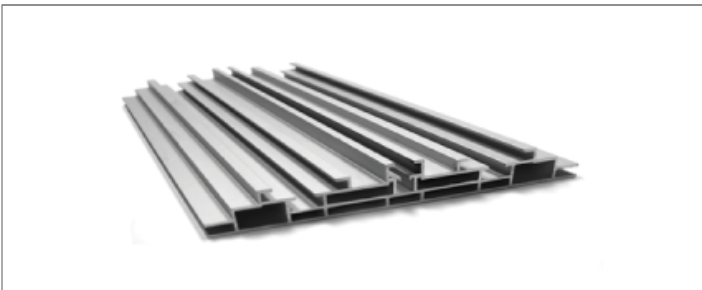


### 180mm Double Side Frame

- 180mm Height (7")
- Suitable for High Power LED Module
- Stabilizers for available optimum reinforcement
- Ceiling pendants for hanging
- Easily disassembled transport
- 180° connectors available for unlimited lengths
- Various styles of feet available for standing
- Additional reinforcement by double large corner hardware

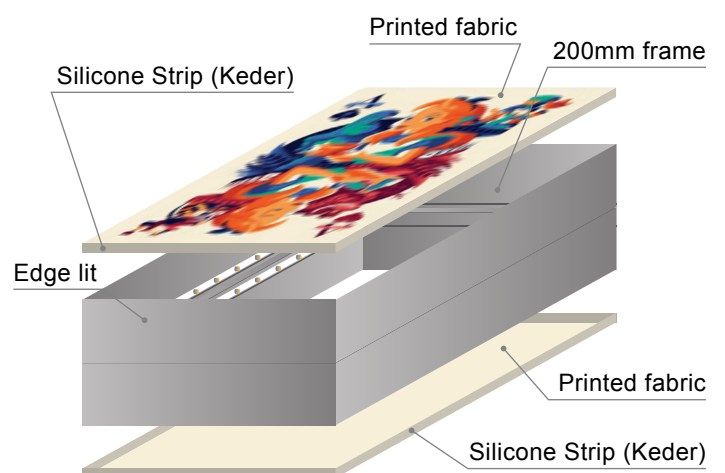


## 7.87 inch



### 200mm Double Side Frame

- 200mm Height (7-7/8")
- Suitable for High Power LED Module
- Stabilizers for available optimum reinforcement
- Ceiling pendants for hanging
- Easily disassembled transport
- 180° connectors available for unlimited lengths
- Various styles of feet available for standing
- Additional reinforcement by double large corner hardware



•••  
**NES Light**  
SMART SOLUTION

1179 Edgewater Ave. Ridgefield, NJ 07657 / Tel : (201) 840-0400 / neslight@gmail.com / info@neslight.com

---

